

# Product Introduction

# Contents



**1. Company Introduction**

**2. About Nexacro N**



# 1. Company Introduction

## The leading IT Dev't Company

### The UI/UX Expert

TOBESOFT was established in the year 2000 as a leading IT development platform company and is the 'first company to be listed on the KOSDAQ' in the industry.

With over 20 years of accumulated technical expertise and customer experience,

We have released top-ranking UI/UX solution platforms such as 'Nexacro N', 'Nexacro Platform', 'X Platform', and possess approximately 7,000 domestic and international reference cases.

Through research and development innovative technologies that integrates new technologies such as AI, we create value for our customers.

We will continue to challenge ourselves with technological innovations.



Company Name	TOBESOFT CO., LTD.
Established On	July 01. 2000
CEO	Moranhee Kim
Capital	KRW 34 billion (as of 2022)
Annual Sales	KRW 43 billion (as of 2022)
Business Area	SW dev't, supply, maintenance
Headquarter	Intops Building, 617 Bongeunsa-ro, Gangnam-gu, Seoul
Website	<a href="http://www.tobesoft.com">www.tobesoft.com</a>
Contact No.	02-2140-7700



## No.1

Business Platform  
Biggest Market Occupancy  
2021



## KOSDAQ

Listed Company



## Global

Company  
US/Japan/China



## 86%

86% of Largest  
Companies in Korea  
are Clients



## 6,000

Completed  
Projects





## 2,000

Annual Number  
of Trainees



TobeSoft is a leading South Korean software company delivering optimized UX business experiences alongside a comprehensive suite of UI/UX and business solutions

UI/UX Solution		Business Solution	
<b>NEXACRO</b>  Meets W3C recommendations UI/UX Dev't Platform	<b>XPLATFORM</b> RIA Based UI Dev't Platform	 <b>TOBE MALL</b> Customized commerce/consultation Cloud Shopping Mall System	<b>V-PASS</b> ICT Technology-Based Smart Access Control System
<b>X·PUSH</b> Push for message Push Solution	<b>MiPlatform</b> X-Internet UI Dev't Platform		

## 2. About Nexacro N



## The optimized UI · UX solution for int'l web standard



NEXACRO N is UI development software that enables users to easily create diverse user interface in accordance with global web standards such as HTML5 / ECMAScript / CSS

**Web  
Standard**

**High  
Performance**

**Dynamic  
Design**

Multi OS, Multi Browser, Multi Device support	WYSIWYG-type integrated UI development tool	Various effects such as themes, CSS, template
Web standards-compliant (HTML/CSS/Script)	Separate UI and data for minimized data traffic	Convenient responsive web development
With web accessibility functions	Optimal communication and compression types	Intuitive design environment



Nexacro N enhances productivity, work efficiency, and the overall system within a business entity. We provide the best solutions to companies that need system improvement.



Nexacro N is the only and the best solution to meet the changes in the complicated ICT environment and the needs in the market

## | Multi - OS & Device |



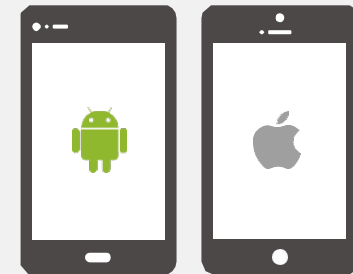
- Supports multi - OS/device/web browser
- No-download product
- Operates on commercial web browsers (Chrome, Firefox, etc.)

## | Desktop |



- Quick and enhanced operation environment
- Customized UI setting (monitoring screen, sales status, etc.) through widget

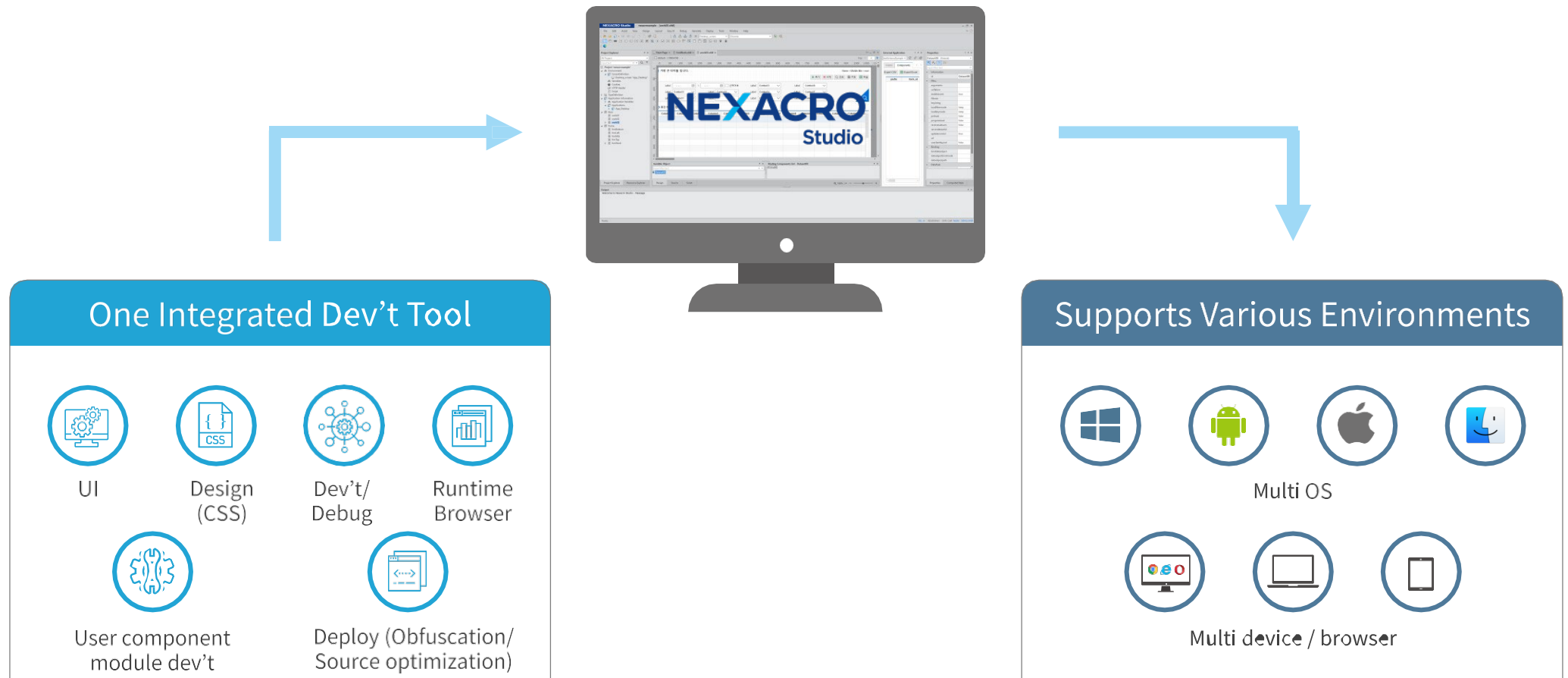
## | Mobile |



- Supports hybrid app and web app
- Solved web view fragmentation issue through \*NRE

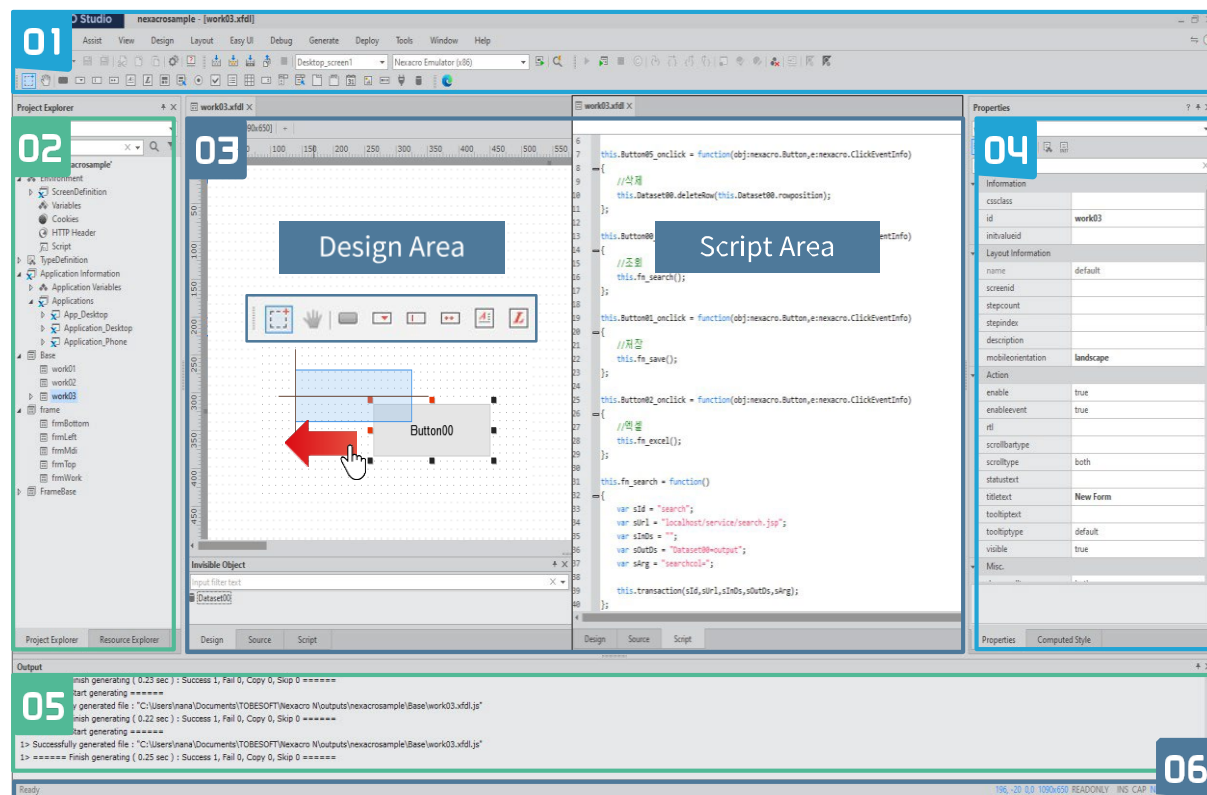
\*NRE : Nexacro Runtime Environment

Nexacro provides integrated development and deployment environment for web applications and mobile APPs that supports different OS and devices.



# Supports dedicated dev't tool “NEXACRO STUDIO”

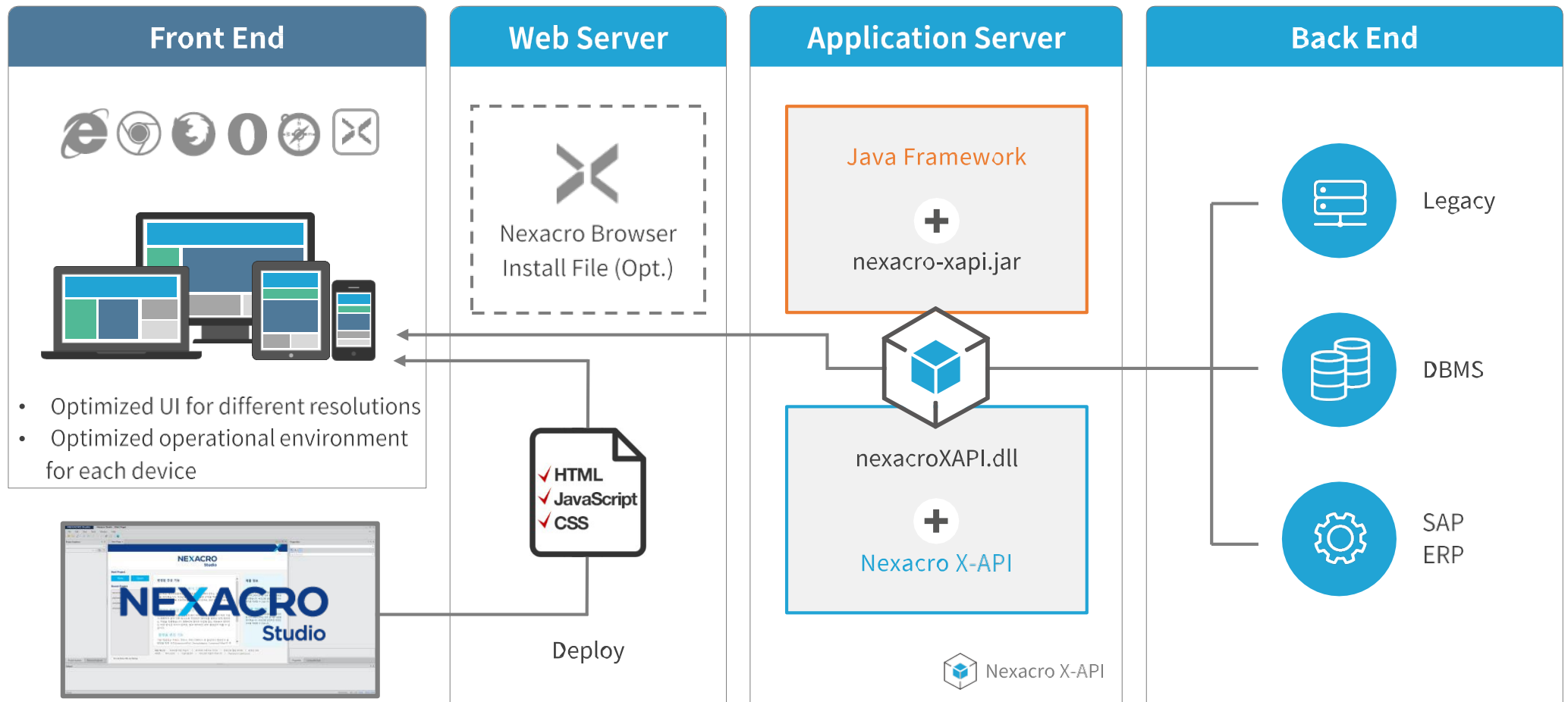
Nexacro Studio provides WYSIWYG-type UI development tool. Drag to create your interface (UI) easy and quickly.



- 01 Tool bar for controlling menu, TextStyle, Alignment, Object, and others (general menu or ribbon interface)
- 02 Project Explorer / Resource Explorer
- 03 Edit design, source, and script
- 04 Display and edit forms, component, Dataset, property, and event
- 05 Display various messages and the results of “search”
- 06 Status bar that display the status of Nexacro Studio

※ WYSIWYG : what you see is what you get

Nexacro supports flexible system architecture. Nexacro N has multi-tier structure and it is compatible with any WAS and any DBMS.



<xtheme, xfdl, xad>

※ Nexacro X-API : Module for exchanging data between Nexacro application and server



## Technical Support

24/7 Technical Support Website  
and  
Customer Call Center

- Patch per program, development tips, trial license
- More than **56,000 Q&A available**
- Answers **within 24 hours**
- **Weekday (09:00 ~ 18:00)/Weekend, Holidays (10:00 ~ 16:00)  
Customer Call Center (1588-7895)**

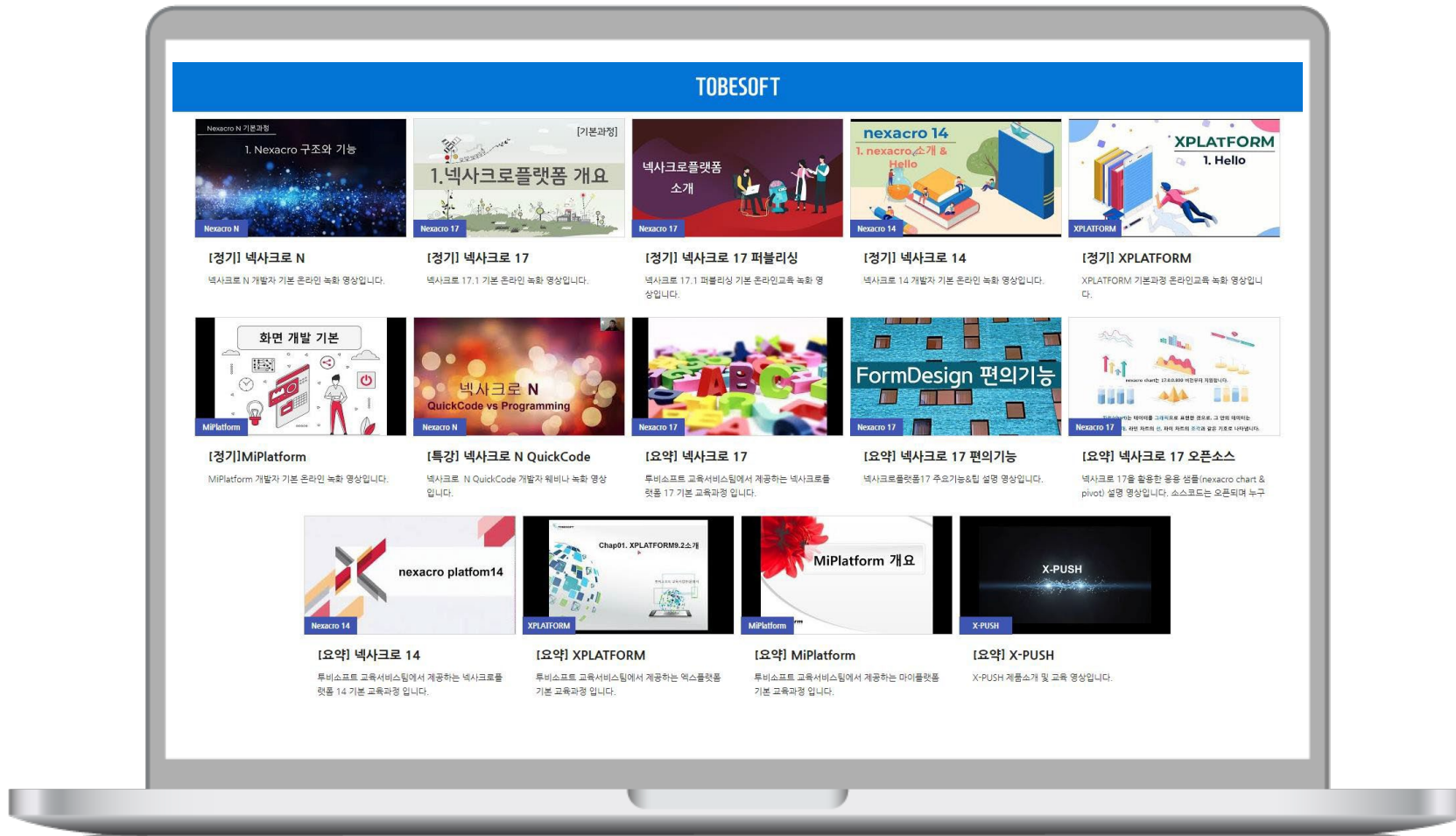


## Expert Assistance

Online and Onsite Assistance

- For matters requiring visits, **our experts provides assistance online and onsite**

- ✓ [edu.tobesoft.com/eduplay/](http://edu.tobesoft.com/eduplay/)
- ✓ [support.tobesoft.com](http://support.tobesoft.com)

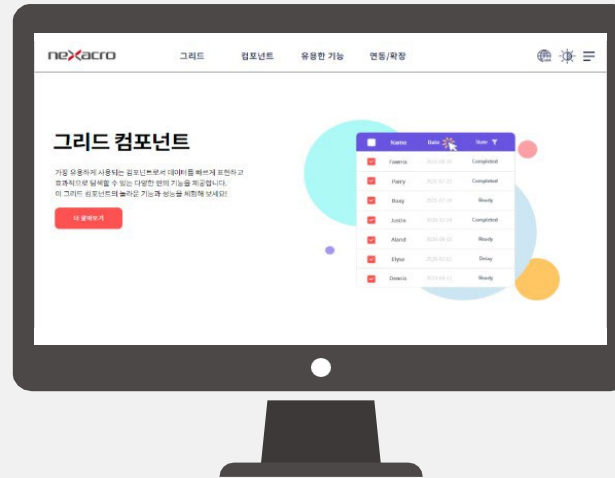


## Documents



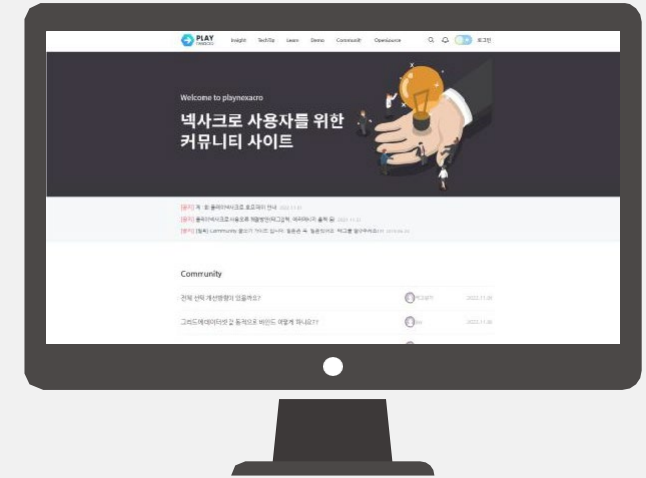
Provides detailed guidelines on product use  
\*English available

## Trial Versions



Provides demo for products

## Community



Operates developers' community with tips/open source/Q&A



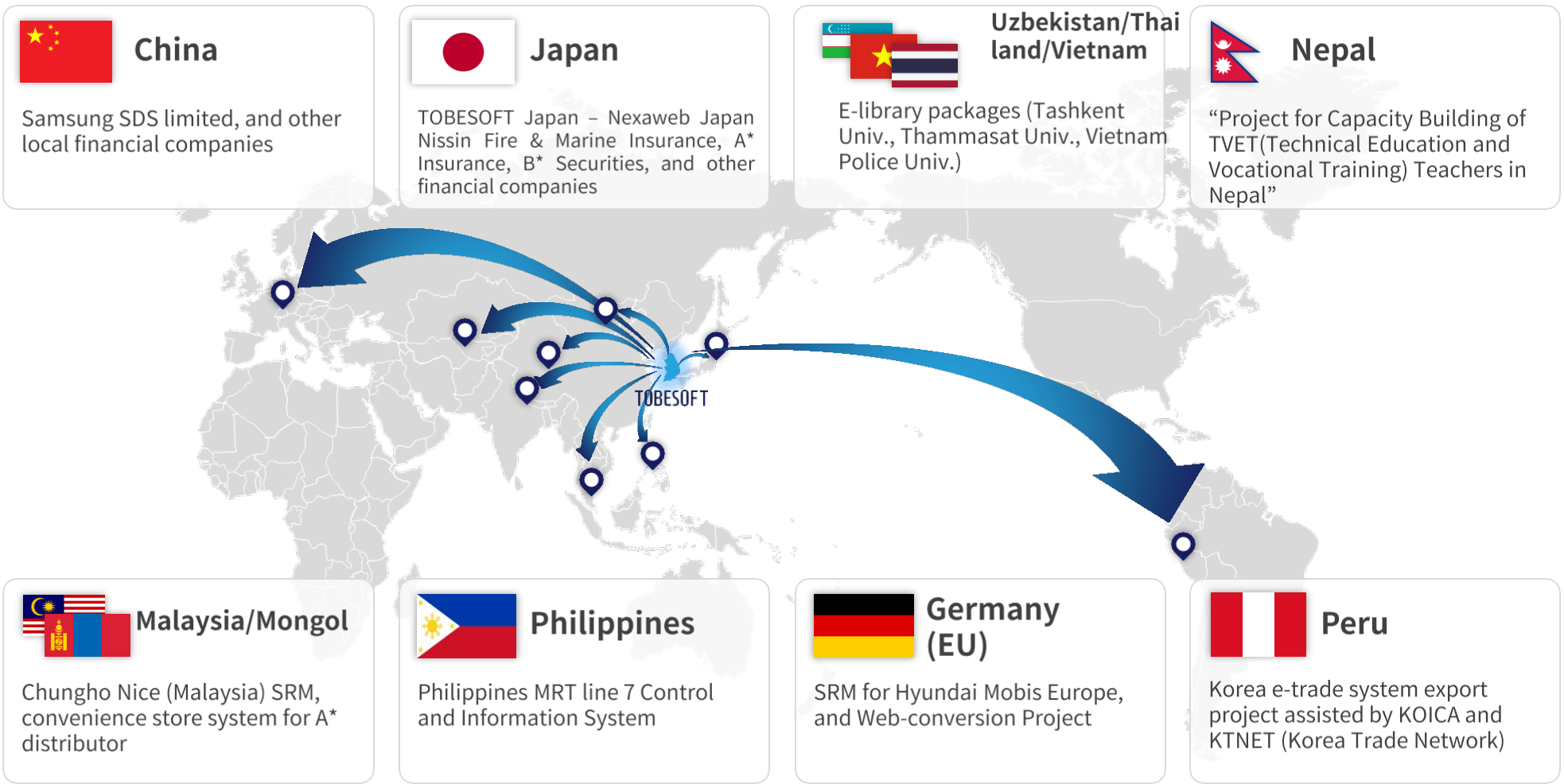
# Clients of TOBESOFT

TOBESOFT accumulated over 17000 reference cases domestic and oversea.

Manufacturing						
Service						
Education						
Public						
Finance						
Overseas						

# Nexacro N Overseas Cases

NEXACRO N is supplied worldwide. We are quickly expanding our market share abroad. NEXACRO N is the optimal UI/UX platform for your business.



## Technology Competitiveness Analysis (Korea)

Category	NEXACRO N		eXbuilder6		WebSquare5	
No. of reference cases	<ul style="list-style-type: none"> <li>1,700 projects</li> <li>More than 5000 references including MiPlatform/XPLATFORM cases</li> </ul>	High	<ul style="list-style-type: none"> <li>40 projects</li> <li>About 100 including projects done by previous products</li> </ul>	Low	<ul style="list-style-type: none"> <li>337 projects</li> <li>About 467 including projects done by previous products</li> </ul>	Ave.
Base Technology	<ul style="list-style-type: none"> <li>HTML and JavaScript</li> </ul>	High	<ul style="list-style-type: none"> <li>HTML and JavaScript</li> </ul>	High	<ul style="list-style-type: none"> <li>Converts XML source in WAS server</li> <li>Only supports Java (Server dependent)</li> </ul>	Ave.
Cross browsing	<ul style="list-style-type: none"> <li>IE, Edge, Chrome, Safari, Firefox, Opera</li> </ul>	High	<ul style="list-style-type: none"> <li>IE, Edge, Chrome, Safari, Firefox, Opera</li> </ul>	High	<ul style="list-style-type: none"> <li>IE, Edge, Chrome, Safari, Firefox, Opera</li> </ul>	High
Source Code Security	<ul style="list-style-type: none"> <li>Source obfuscation (Source compress and changing variables)</li> <li>Source compilation (Dedicated browser)</li> </ul>	High	<ul style="list-style-type: none"> <li>Source obfuscation ( Source compress and changing variables)</li> </ul>	High	<ul style="list-style-type: none"> <li>The deploy file in in XML format. Source obfuscation is not possible</li> </ul>	Low
MDI Function	<ul style="list-style-type: none"> <li>MDI function (C/S level)</li> </ul>	High	<ul style="list-style-type: none"> <li>MDI button fixed on top and bottom</li> <li>Does not support window alignment</li> </ul>	Ave.	<ul style="list-style-type: none"> <li>MDI button fixed on top and bottom</li> <li>Supports window alignment</li> </ul>	Ave.
Design Functions and Applications	<ul style="list-style-type: none"> <li>Provides CSS editor in dev't tool</li> <li>Standardization is possible using the PreDefine function</li> <li>Automatically creates CSS file for each browse</li> <li>Provides easy interface for developers</li> </ul>	High	<ul style="list-style-type: none"> <li>Supports CSS3 and WYSWYG editor</li> <li>Supports CSS LESS design method</li> </ul>	High	<ul style="list-style-type: none"> <li>Unable to design the screen without a publisher (The design shown in the original source and the executed source is completely different)</li> <li>Old version FireFox 4.0 loaded as editor (CSS3 rendering not fully supported)</li> </ul>	Ave.
Provides Dedicated Browser	<ul style="list-style-type: none"> <li>Provides a dedicated browser with C/S level functions and performance</li> </ul>	High	<ul style="list-style-type: none"> <li>Not supported</li> </ul>	-	<ul style="list-style-type: none"> <li>Provides separate product named W-Browser</li> <li>Open source Chromium browser</li> </ul>	-
Integration with External Modules	<ul style="list-style-type: none"> <li>ActiveX extension for IE and dedicated browser.</li> <li>Direct integration into a dedicated viewer through DLL wrapping.</li> <li>Supports X-Agent solution for web-based device integration.</li> </ul>	High	<ul style="list-style-type: none"> <li>Integrates with a separate product named eXDevice+</li> </ul>	-	<ul style="list-style-type: none"> <li>Integrates with a separated product named W-Gear</li> <li>Needs to register as service after installing user PC</li> </ul>	-
Mobile	<ul style="list-style-type: none"> <li>Support for Web App and Hybrid App</li> <li>Providing over 20 different Device APIs</li> <li>Optimization support for various screen sizes per device</li> <li>Preview support through Screen Emulator</li> </ul>	High	<ul style="list-style-type: none"> <li>Not supported</li> </ul>	-	<ul style="list-style-type: none"> <li>Provides a separate product</li> <li>Open source based internally (Apache Cordova)</li> </ul>	-
Push	<ul style="list-style-type: none"> <li>Provides X-Push (TOBESOFTW owned solution)</li> </ul>	High	<ul style="list-style-type: none"> <li>Not supported (Integrates with a separate push solution)</li> </ul>	Low	<ul style="list-style-type: none"> <li>Not supported</li> <li>(Integrates with a separate push solution)</li> </ul>	Low
Responsive Web	<ul style="list-style-type: none"> <li>Quick and easy dev't using MLM(Multi Layout Management)</li> <li>Screen layout per page using STEP function</li> </ul>	High	<ul style="list-style-type: none"> <li>Vertical/flow layout function</li> </ul>	High	<ul style="list-style-type: none"> <li>Supports through Media Query</li> <li>No functions within the dev't tool</li> </ul>	High
Pivot	<ul style="list-style-type: none"> <li>Provides proprietary pivot components</li> <li>Pivot configuration possible without coding using a dedicated editor</li> <li>Superior support for processing large-scale data compared to commercial components</li> </ul>	High	<ul style="list-style-type: none"> <li>Provides proprietary pivot components but with minimal functions</li> </ul>	Low	<ul style="list-style-type: none"> <li>Providing proprietary pivot components</li> <li>Dedicated editor not available</li> <li>Inability to load large amounts of data (due to memory issues)</li> </ul>	Ave.
Technological Assistance and Training	<ul style="list-style-type: none"> <li>Separate Helpdesk operation (24/7) and rapid technical support response (dedicated technical support team of over 40 members)</li> <li>Separate team of 60 personnel for research and development of products and testing</li> <li>Regular training conducted in Seoul and Busan</li> </ul>	High	<ul style="list-style-type: none"> <li>Customer support center operation (weekdays only)</li> <li>Technical support provided by a team of 51, including 20 research institute employees</li> <li>Training available upon confirmation by designated personnel through email application (participants need to bring their own laptops)</li> </ul>	Low	<ul style="list-style-type: none"> <li>Customer support center operation (weekdays only)</li> <li>Real-time responses not available on the technical support site</li> <li>Regular training conducted (participants need to bring their own laptops)</li> <li>Technical support operated primarily through outsourcing</li> </ul>	Low



## Technology Competitiveness Analysis (Overseas)

Category	NEXACRO N	Kendo UI	ExtJS
Manufacturer	<ul style="list-style-type: none"> <li>• TOBESOFT (Country: Korea)</li> </ul>	<ul style="list-style-type: none"> <li>• Telerik (Country: Bulgaria)</li> </ul>	<ul style="list-style-type: none"> <li>• Sencha (Country: US/ IDERA acquired in 2017)</li> </ul>
Outline	<ul style="list-style-type: none"> <li>• Javascript UI F/W UI</li> <li>• Supports both Web and App. (Supports both Desktop and Mobile)</li> </ul>	<ul style="list-style-type: none"> <li>• Javascript UI F/W UI</li> </ul>	<ul style="list-style-type: none"> <li>• Javascript UI F/W UI</li> </ul>
Components	<ul style="list-style-type: none"> <li>• Web Ver. (Javascript F/W based)</li> <li>• App. Ver. (Proprietary Jender &amp; V8 based )</li> </ul>	<ul style="list-style-type: none"> <li>• Web Ver. (Javascript F/W based)</li> </ul>	<ul style="list-style-type: none"> <li>• Ext Core (DOM search and control)</li> <li>• Ext JS (Works as the UI )</li> </ul>
Application	<ul style="list-style-type: none"> <li>• Desktop (Web &amp; App.)</li> <li>• Mobile (Web &amp; App.)</li> </ul>	<ul style="list-style-type: none"> <li>• Desktop (Web)</li> <li>• Mobile (Using Web, Hybrid - PhoneGap)</li> </ul>	<ul style="list-style-type: none"> <li>• Desktop (Web)</li> <li>• Mobile (Web, Hybrid)</li> </ul>
Development Method	<ul style="list-style-type: none"> <li>• Dedicated development tool Nexacro Studio using the WYSIWYG method</li> <li>• Shared usage between developers and designers (publishers)</li> <li>• UI supported with XML, logic with Javascript, and CSS</li> </ul>	<ul style="list-style-type: none"> <li>• Development in HTML and Javascript through the Editor tool</li> <li>• Relatively low productivity</li> </ul>	<ul style="list-style-type: none"> <li>• Provides Sencha Architect in Drag &amp; Drop format</li> <li>• Offers IDE Plugins (Eclipse, Visual Studio, JetBrains)</li> <li>• Offers Theme Editor</li> </ul>
Technology Assistance	<ul style="list-style-type: none"> <li>• CS Center (1588-7895) operational 365 days a year</li> <li>• Provides online support board for Q&amp;A, samples</li> <li>• Ensures smooth offline technical support compared to imported products</li> </ul>	<ul style="list-style-type: none"> <li>• CS center (telerik - English)</li> <li>• Provides online CS support through Q&amp;A and providing sample (English)</li> </ul>	<ul style="list-style-type: none"> <li>• Online CS center (English only)</li> </ul>
Keypoints (Procs and Cons)	<ul style="list-style-type: none"> <li>• Supports Cross-Platform development using the same development tool (Web &amp; App, Desktop &amp; Mobile support)</li> <li>• Development through dedicated tool using the WYSIWYG method</li> <li>• Supports Web and App through OSMU</li> </ul>	<ul style="list-style-type: none"> <li>• Commercial Javascript F/W</li> <li>• Provides about 70 UI components</li> <li>• Only provides web based technological support</li> <li>• App version not supported</li> </ul>	<ul style="list-style-type: none"> <li>• Provides about 140 UI components</li> <li>• Functions limited depending on the license type</li> <li>• Only provides web based technological support</li> <li>• App version not supported</li> </ul>

**End of Document**

A decorative graphic consisting of several overlapping lines. A white line starts from the left edge, moves horizontally, then curves down and right, then horizontally, then curves up and right, then horizontally, then curves down and right, ending at the bottom edge. A cyan line starts from the bottom edge, moves horizontally, then curves up and right, then horizontally, then curves down and right, then horizontally, then curves up and right, ending at the top edge. The two lines overlap in the center-right area.